

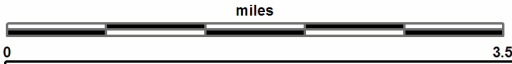
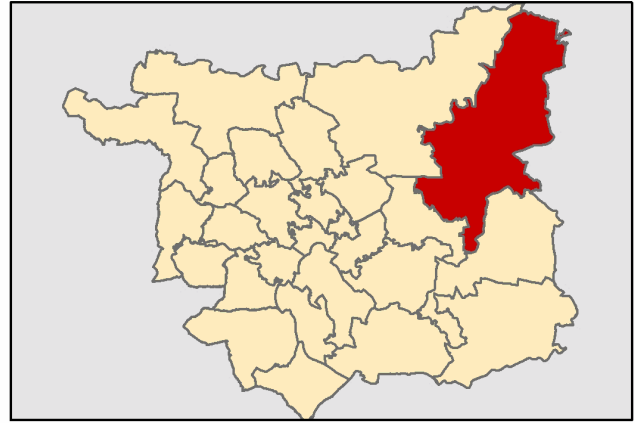
EPOS - Boston Spa and Villages South

This report was produced by the Children's Performance Service on 01/06/2012. The information in these overviews are based on the cluster data profile version 5.12.

For more information telephone 0113 39 50701 or email educ.pmi@leeds.gov.uk or visit:

www.leedsinitiative.org/ClusterDataProfile.aspx

The map to the right gives the position of the cluster in Leeds. The map below shows the location of the Children's Centres, Primary and Secondary Schools in the cluster.



Map Key: EPOS - Boston Spa and Villages South

1 - Children's Centre/s

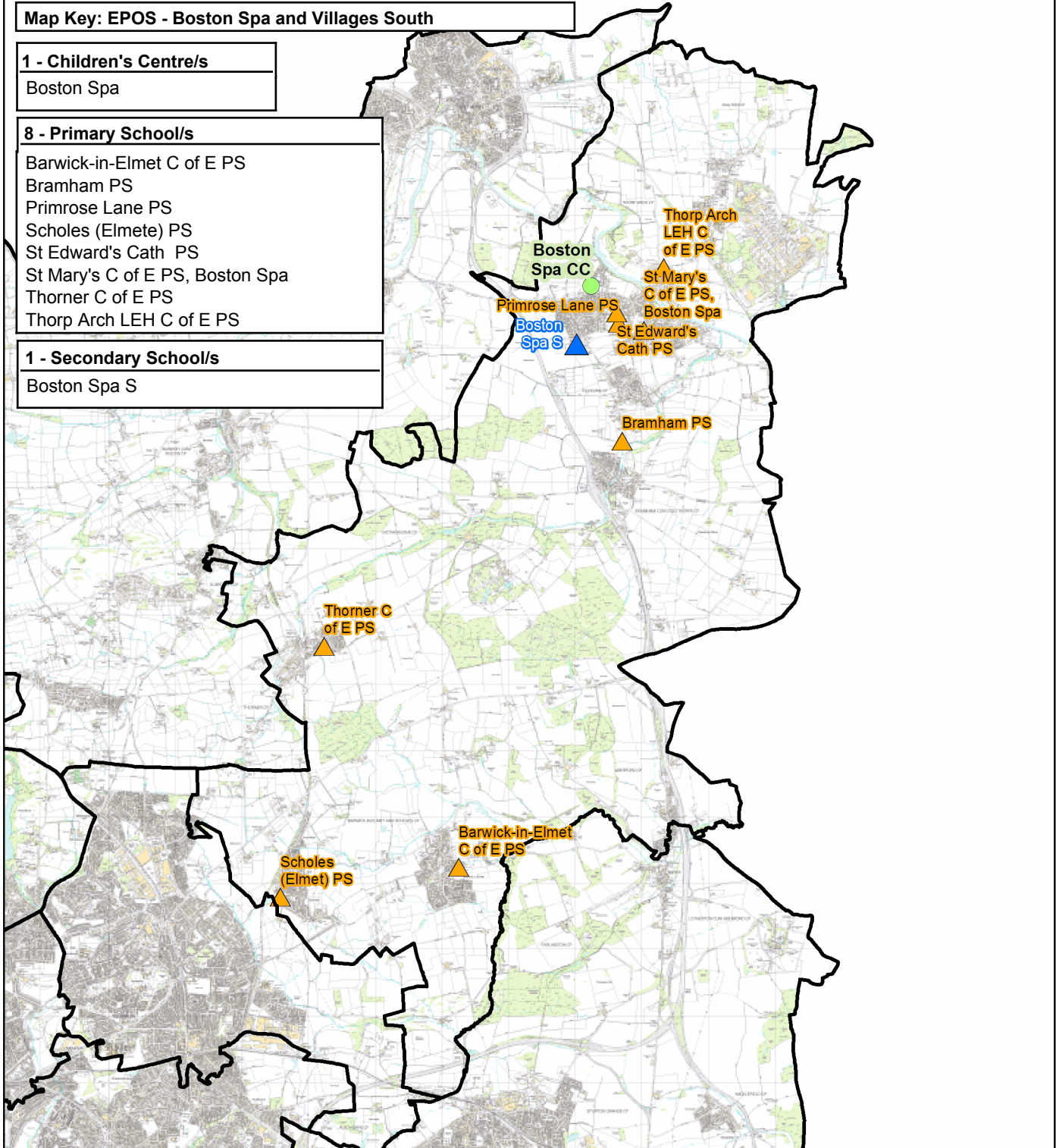
Boston Spa

8 - Primary School/s

- Barwick-in-Elmet C of E PS
- Bramham PS
- Primrose Lane PS
- Scholes (Elmete) PS
- St Edward's Cath PS
- St Mary's C of E PS, Boston Spa
- Thorner C of E PS
- Thorp Arch LEH C of E PS

1 - Secondary School/s

Boston Spa S



Cluster Overviews key**Data Period:**

The codes in the key to the right are for the time periods that the data in these reports cover. They will appear next to all data sets.

Academic Year

Calendar Year

Financial Year

Snapshot

Other

DP:A**DP:C****DP:F****DP:S****DP:O****Cluster Overview**

Data Source: January School Census					DP: S
Primary Schools	DFE	Total Number on roll			
		2010	2011	2012	
Barwick-in-Elmet C of E Primary School	3033	147	145	149	
Boston Spa C of E Primary School	3047	121	129	139	
Bramham Primary School	2329	34	37	50	
Primrose Lane Primary School	2389	243	230	244	
Scholes (Elmete) Primary School	2275	266	281	294	
St Edward's Catholic PS	3358	141	143	151	
Thorner C of E Primary School	3044	154	165	179	
Thorp Arch Lady Elizabeth Hastings C of E Primary	3356	135	136	137	
Total		1241	1266	1343	

Data Source: January School Census					DP: S
Secondary Schools	DFE	Total Number on roll			
		2010	2011	2012	
Boston Spa School	4114	1696	1634	1493	
Total		1696	1634	1493	

Data Source: Children's Services - Feb 2012		DP: S
Children's Centre reach area registration for families of children aged 0-5	% Registered	
Cluster	36.48	
Wedge	59.28	
Leeds all	60.23	

Data Source: Children's Services	
Children's Centre	Ofsted ID
Boston Spa	

Data Source: The office of National Statistics population mid-year estimates									DP: S
Population Estimates	0-15			Working Age			60/65+		
	2008	2009	2010	2008	2009	2010	2008	2009	2010
Cluster	2724	2727	2722	9842	9765	9763	4202	4302	4368
Wedge	40736	40931	41233	132341	133770	135300	37146	37313	37640
Leeds all	132741	133396	134493	516578	522769	531036	129937	131536	133240

Data Source: NHS Leeds													DP: S
Under Fives	September 2010						September 2011						
	0-1	1-2	2-3	3-4	4-5	Total	0-1	1-2	2-3	3-4	4-5	Total	
Cluster	155	149	174	181	178	837	146	156	155	180	188	825	
Wedge	3177	3061	3042	2929	2892	15101	3041	3163	3021	2987	2942	15154	
Leeds all	10202	9848	9478	9195	9113	47836	9996	10173	9787	9438	9319	48713	

Data Source: January School Census												DP: S
Percentage of pupils who are:	Black and Minority Ethnic			English as an Additional Language			Free School Meal Eligible			Special Education Needs		
	2010	2011	2012	2010	2011	2012	2010	2011	2012	2010	2011	2012
Primary												
Cluster school	3.5	4.5	5.9	0.2	0.6	0.4	6.6	7.2	6.5	13.4	14.0	13.8
Cluster residence	3.2	3.4	4.9	0.5	0.8	0.7	6.8	6.9	7.0	13.8	13.9	14.0
Wedge school	41.6	42.9	44.0	27.2	28.2	28.9	25.0	25.2	24.7	19.5	19.9	18.5
Total primary	23.6	24.8	26.4	15.8	16.5	17.1	21.5	22.2	22.0	17.8	17.8	17.4
Secondary												
Cluster school	9.2	9.3	10.4	2.2	2.4	3.3	13.2	11.5	12.1	17.0	16.9	14.9
Cluster residence	2.6	2.8	4.2	0.7	0.4	1.1	8.6	6.6	8.3	14.5	15.5	13.7
Wedge school	37.5	39.2	41.1	19.5	17.3	19.8	23.2	23.9	24.2	23.9	25.6	22.1
Total secondary	18.6	19.4	20.4	10.4	10.0	11.1	19.0	19.4	19.5	21.4	20.4	19.0
Leeds all	21.4	22.5	23.9	13.4	13.7	14.6	20.6	21.1	21.1	20.0	19.6	18.7

Data Source: HM Revenue and Customs - taken on 31st August 2007-2009										DP: S
Child Poverty	Number of children (under 16) in families in receipt of CTC or IS/JSA			Number of children (all ages) in families in receipt of CTC or IS/JSA			Number of children in poverty, by age of youngest child, 2009			
	2007	2008	2009	2007	2008	2009	0-4	5-10	11-15	16-19
Cluster	150	165	200	180	190	225	120	60	35	10
Wedge	11340	10850	10970	12700	12220	12500	6540	3560	1850	550
Leeds all	30235	29700	31030	33690	33300	34965	18720	9640	5115	1490

Data Source: Children's Services - Summer Term 2011					DP: S
Nursery Education Grant Claims	Number of eligible children	Number of: Claims by childcare setting		Resident Claims	Non Resident Claims
Cluster	288	327		226	102
Leeds all	14500	13851		9704	4148

Data Source: January School Census and 2010 Index of Multiple Deprivation										DP: S
IMD % of pupils resident in most deprived areas	3% most deprived			10% most deprived			20% most deprived			
	10	11	12	10	11	12	10	11	12	
Primary										
Cluster school	1.1	1.4	1.3	2.7	2.9	3.2	4.9	4.9	5.8	
Cluster residence	0.0	0.0	0.0	0.0	0.0	0.0	0.0	0.0	0.0	
Wedge school	16.7	15.3	15.5	44.8	43.2	43.4	53.3	53.2	53.8	
Total primary	8.2	8.4	8.3	28.1	27.1	27.3	36.6	37.6	38.0	
Secondary										
Cluster school	2.2	3.6	3.9	12.1	14.7	16.1	25.1	25.6	25.9	
Cluster residence	0.0	0.0	0.0	0.0	0.0	0.0	0.0	0.0	0.0	
Wedge school	14.2	13.8	14.4	39.1	38.8	39.4	49.4	49.9	50.4	
Total secondary	7.0	7.5	7.6	24.0	23.5	23.8	32.3	33.5	33.6	
Leeds all	7.7	8.0	8.0	26.4	25.7	25.9	34.8	35.9	36.2	

Data Source: January School Census and CACI ACORN											DP: S
KEY: Wealther Achievers(WA), Urban Prosperity (UP), Comfortably Off (CO), Moderate Means (MM), Hard Pressed (HP)											
Percentage of pupils in each ACORN category	2011					2012					
	WA	UP	CO	MM	HP	WA	UP	CO	MM	HP	
Primary											
Cluster school	46.0	2.8	38.0	4.0	8.3	44.9	2.9	37.7	4.4	8.9	
Cluster residence	47.1	2.8	41.4	2.5	6.0	46.7	2.8	41.0	2.6	6.2	
Wedge school	19.9	9.4	19.5	16.8	33.6	19.4	9.2	19.7	16.7	34.1	
Total primary	15.4	5.9	27.8	15.8	34.3	15.0	6.0	27.7	15.9	34.6	
Secondary											
Cluster school	28.9	1.5	31.0	12.7	25.0	28.8	2.0	31.3	12.1	25.0	
Cluster residence	43.0	1.2	44.7	3.2	7.6	41.6	1.2	46.2	3.1	7.4	
Wedge school	19.0	8.5	21.3	16.2	34.2	18.7	8.8	21.2	16.0	34.7	
Total secondary	17.1	5.2	29.7	14.7	32.5	16.9	5.3	29.8	14.7	32.6	
Leeds all	16.1	5.6	28.5	15.4	33.6	15.8	5.7	28.5	15.4	33.8	

Data Source: DWP information Directorate													DP: F
KEY: Job Seekers Allowance (JSA), Incapacity Benefit (IB), Lone Parent Benefit (LPB), Total Out of Work (TOW)													
Unemployment Percentage of working age people in receipt of:	2009				2010				2011				
	JSA	IB	LPB	TOW	JSA	IB	LPB	TOW	JSA	IB	LPB	TOW	
Cluster	2.1	3.6	0.5	6.4	1.7	3.4	0.5	5.9	1.7	3.3	0.5	5.7	
Wedge	5.2	6.8	2.5	15.0	5.2	6.8	2.2	14.8	5.2	6.8	2.0	14.6	
Leeds all	4.4	5.9	1.8	12.6	4.3	5.8	1.7	12.3	4.2	5.8	1.5	12.1	

Data Source: AXCIOM Lifestyle Survey 2009-2011													DP: S					
	Property type by %									Length of residence by %								
	Owned			Rented - Council			Rented - Private			Less than 1 year			2-5 years			More than 5 years		
	09	10	11	09	10	11	09	10	11	09	10	11	09	10	11	09	10	11
Cluster	79.9	79.6	16.0	12.3	12.8	61.6	7.7	7.6	0.1	2.8	7.0	1.5	20.8	19.3	14.1	76.4	73.8	84.4
Wedge	58.9	59.1	44.4	25.7	25.8	58.7	15.4	15.2	0.0	5.8	7.1	4.4	19.0	18.0	17.6	75.2	74.9	78.1
Leeds all	61.5	61.6	39.0	24.0	23.9	61.2	14.5	14.6	0.0	7.9	8.1	5.1	20.3	20.0	18.5	71.9	71.9	76.4
Income by %	<10k			10-20k			20-30k			30-40k			40-50k			50k+		
	09	10	11	09	10	11	09	10	11	09	10	11	09	10	11	09	10	11
Cluster	12	11	12	16	14	19	13	20	21	21	11	12	19	26	19	19	18	16
Wedge	19	20	17	21	20	25	15	13	15	15	17	17	16	15	13	15	15	13
Leeds all	20	18	18	21	20	23	16	15	16	15	18	17	14	13	13	14	16	14
Struggling with payments by %	Food									Bills			Mortgage					
				09	10	11				09	10	11				09	10	11
Cluster				7.7	7.5	3.9				7.8	8.5	5.5				2.0	1.7	0.6
Wedge				15.1	11.7	6.6				17.8	15.0	9.2				2.3	2.0	1.6
Leeds all				15.9	10.8	6.4				16.3	13.0	8.3				2.2	2.2	1.7

Being Healthy

Data Source: NHS Leeds										DP: Various - Listed with each report			
Birth Data	3 year rolling average of births below 2.5kg					Number and rate of conceptions per 1000 15-17 year olds							
	% low birth weight babies					Number		Rate					
	2006-08		2007-09		2008-10	June to May	2008-09	2009-10	2008-09	2009-10			
Cluster	4.7		6.0		6.7	Cluster	7	9	14	19			
Wedge	8.8		8.6		8.5	Wedge	368	331	44	40			
Leeds all	7.8		7.8		7.6	Leeds all	1220	1145	45	43			
DP: C	% of women receiving a health and social care needs assessment at 12 weeks as a percentage of live births in the same year			DP: F		% Initiating breastfeeding April to March		% breastfeeding at 6 weeks April to March					
	2009	2010	2011	2009-10	2010-11	2009-10	2010-11						
Cluster	87.7	85.1	89.7	82.2	68.4	63.6	49.3						
Wedge	78.6	80.0	81.3	71.6	68.0	44.7	43.9						
Leeds all	81.6	82.9	84.0	67.6	65.1	40.4	39.3						
DP: C	Number of emergency admissions by age group 2007-11			Number of emergency admissions to hospital for injury, poisoning and certain other consequences of external causes by age group									
	0-4	5-10	11-18	0-4	5-10	11-18							
Cluster	663	183	311	49	47	99							
Wedge	9631	2721	5612	1033	791	2006							
Leeds all	29793	8247	18194	3419	2522	6711							
Immunisation Data	% of 2 year olds receiving vaccinations in quarter 3 for:						% of 5 year olds receiving vaccinations in quarter 3 for:						
	Diphtheria			MMR			Diphtheria			MMR			
DP: F	09-10	10-11	11-12	09-10	10-11	11-12	09-10	10-11	11-12	09-10	10-11	11-12	
Cluster	95	96	97	84	91	94	94	90	94	89	83	94	
Wedge	95	96	96	87	87	93	93	92	95	89	91	94	
Leeds all	96	96	97	86	88	94	95	94	96	91	91	95	

Data Source: National Child Measurement Programme												DP: A		
Obesity	Obesity in Reception						Obesity in Year 6							
	% Obese			% Obese or overweight			% Obese			% Obese or overweight				
	08-09	09-10	10-11	08-09	09-10	10-11	08-09	09-10	10-11	08-09	09-10	10-11		
Cluster	9.7	7.4	7.3	19.0	19.6	18.8	16.4	20.7	18.5	32.3	37.9	34.2		
Wedge	9.7	10.4	10.1	21.4	23.3	23.2	20.3	22.1	20.5	33.9	36.6	35.2		
Leeds all	9.4	10.2	9.7	21.7	23.7	23.4	20.3	20.7	20.0	34.3	35.1	34.3		
Obesity	Obesity in Reception			Obesity in Year 6										
	3 year average 2008-2011			3 year average 2008-2011										
	% Obese			% Obese or overweight			% Obese			% Obese or overweight				
Cluster	8.12			19.12			18.40			34.64				
Wedge	10.07			22.68			20.89			35.18				
Leeds all	9.77			22.96			20.32			34.56				

Stay Safe

Data Source: Children's Services					DP: Various - Listed with each report											
Number of LAC and Child protection plans	The number of children and young people looked after by the Local Authority - March based on home address before coming into care					The number of children with child protection plans - March										
	DP: S					DP: S										
	2011		2012		2012		2011		2012							
Cluster	SUPP		SUPP		19		5		6							
Wedge	0		474		315		0		246							
Leeds all	1439		1454		1454		947		1019							
Number of Common Assessments (CAFs)					Social Care			Social Care Referrals		Requests for Service						
DP: C					DP: A			DP: S		Feb 11 - Jan 12						
		2008	2009	2010	2011			2009	2010	2011						
Cluster	6		8		19		9		83		112		98		222	
Wedge	143		307		344		268		3823		4170		4103		8634	
Leeds all	457		849		1115		892		14248		13784		14000		30539	
Number of Child and Adolescent Mental Health Services referrals																
DP: S																
		aged 11 and under				aged 12-18				total referrals						
September-October		2009-10		2010-11		2009-10		2010-11		2009-10		2010-11				
Cluster	21		16		15		23		36		39					
Wedge	471		250		686		429		1157		679					
Leeds all	1767		1124		2976		1730		4743		2854					

Make a positive Contribution

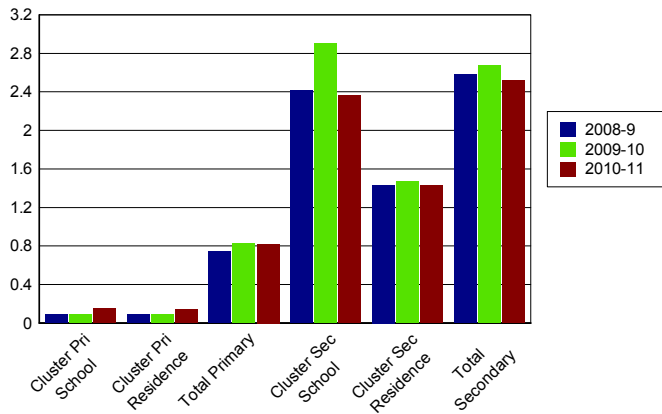
Data Source: West Yorkshire Police										DP: C										
Property Crime Number of recorded crimes for:	Burglary dwelling		Burglary elsewhere		Criminal damage		Robbery		Vehicle crime											
	10		11		10		11		10		11									
	Cluster	76		72		105		119		94		93		370		323		2368		1919
Wedge	2789		2404		1062		1234		3572		2902		1297		1226		9168		7971	
Leeds all	9508		8487		5681		5408		13599		10426		1297		1226		9168		7971	
Personal Crime Number of recorded crimes for:					Drug Offences		Theft from person		Violent crime											
					10		11		10		11									
	Cluster	25		38		128		38		55		71								
Wedge	378		915		405		298		2375		2556									
Leeds all	1248		3192		2235		3034		11233		10896									
Domestic Violence Incidents		Number of incidents recorded with a domestic qualifier or disposition code on the Storm WYP incident recording system - 2011																		
Cluster	112																			
Wedge	4116																			
Leeds all	14525																			

Data Source: Youth Offending Service										DP: A						
Youth Offending	Number of Offenders					Number of Offences										
	07-08		08-09		09-10		10-11		07-08		08-09		09-10		10-11	
Cluster	16		9		13		14		30		12		22		22	
Wedge	780		515		405		439		1899		1454		901		883	
Leeds all	2741		2166		1522		1511		6331		4883		3134		3150	
April 2010 - March 2011 Number of offences by young offenders																
	Burglary	Breaches	Criminal Damage	Drugs Offences	Motoring and Vehicle	Other	Public Order	Theft and handling	Violence against the person							
Cluster	SUPP	SUPP	SUPP	SUPP	SUPP	SUPP	SUPP	SUPP	6							
Wedge	69	85	99	66	77	108	95	125	159							
Leeds all	291	270	328	204	218	358	282	612	587							

Data Source: School Census													DP: A
Attendance and persistent absence by percentage	Attendance			Authorised Absence			Unauthorised Absence			Persistent Absence 15%			
	08-09	09-10	10-11	08-09	09-10	10-11	08-09	09-10	10-11	08-09	09-10	10-11	
Primary													
Cluster school	95	96	96	5	3	4	0.1	0.1	0.1	2.8	1.6	1.4	
Cluster residence	95	96	96	5	3	4	0.1	0.1	0.1	2.2	1.0	1.5	
Total primary	94	94	95	5	5	4	0.7	0.8	0.8	5.9	5.5	4.3	
Secondary													
Cluster school	91	91	93	7	6	5	2.4	2.9	2.4	13.7	14.3	10.5	
Cluster residence	93	93	94	6	5	5	1.4	1.5	1.4	9.1	9.0	7.9	
Total secondary	92	92	92	6	6	5	2.6	2.7	2.5	13.0	13.1	11.2	

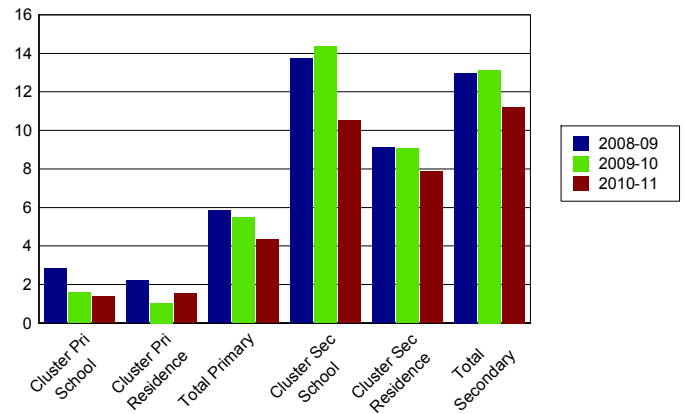
% Unauthorised Absence

2008-2011



% Persistent Absence

by 15% measure 2008-2011



Data Source: Children's Services													DP: A
Exclusions	Fixed Term Exclusions						Permanent Exclusions						
	Number			Rate per thousand			Number			Rate per thousand			
Primary	08-09	09-10	10-11	08-09	09-10	10-11	08-09	09-10	10-11	08-09	09-10	10-11	
Cluster school	8	7	1	6.6	5.6	0.8	0	0	0	0.0	0.0	0.0	
Cluster residence	10	7	7	7.6	5.2	5.2	0	0	0	0.0	0.0	0.0	
Total primary	467	371	455	7.7	6.0	7.3	2	2	2	0.0	0.0	0.0	
Secondary													
Cluster school	321	136	179	179.4	80.2	109.5	0	1	0	0.0	0.6	0.0	
Cluster residence	54	29	45	89.7	51.9	84.3	0	0	0	0.0	0.0	0.0	
Total secondary	4350	4286	3806	93.6	93.1	83.2	52	57	44	1.1	1.2	1.0	

Enjoy and Achieve

Data Source: Keyphas and DFE performance tables
DP: A
Foundation Stage Profile Data The percentage of pupils achieving a good level of development (78+ points overall and 6+ points in all PSE and CCL strands)

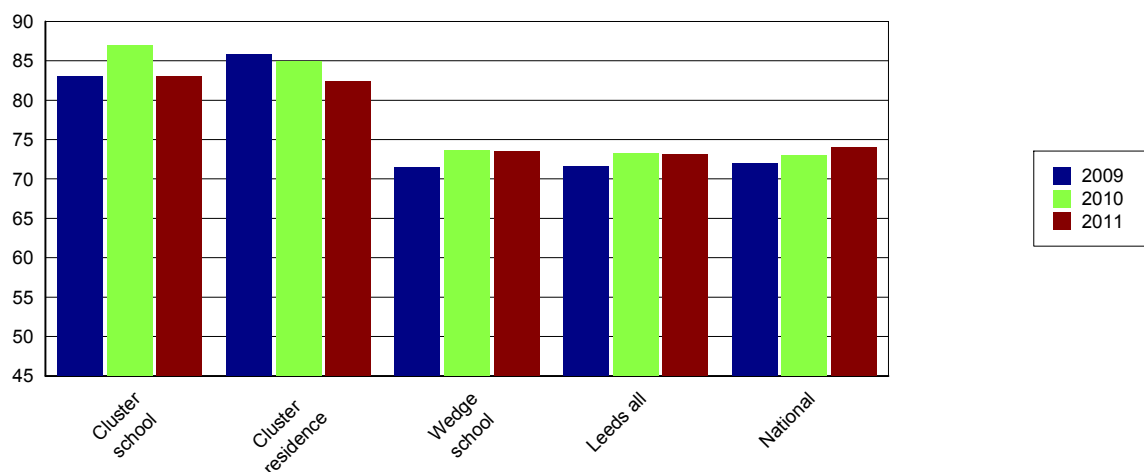
	2008	2009	2010	2011
Cluster school	59	65	70	71
Cluster residence	58	64	70	75
Leeds all	47	51	53	58

KS2 Data DP: A	English 4+			English 5+			Maths 4+			Maths 5+			English & Maths 4+		
	09	10	11	09	10	11	09	10	11	09	10	11	09	10	11
Cluster school	90	92	88	41	48	46	86	89	84	45	50	43	83	87	83
Cluster residence	91	90	89	37	49	43	90	88	85	46	54	46	86	85	82
Wedge school	78	78	80	31	31	30	78	79	78	35	32	33	71	74	74
Leeds all	79	79	81	28	31	32	77	79	78	33	31	32	72	73	73
National	80	80	82	29	33	29	79	79	80	35	34	35	72	73	74

KS2 Data - Expected progress	Made 2 levels of progress in English		Made 2 levels of progress in Maths	
	Number of pupils	Percentage	Number of pupils	Percentage
Cluster school	132	89.8	121	82.9
Wedge school	1865	90.5	1804	87.2
Leeds all	6334	88.6	6087	85.0
National		84.0		83.0

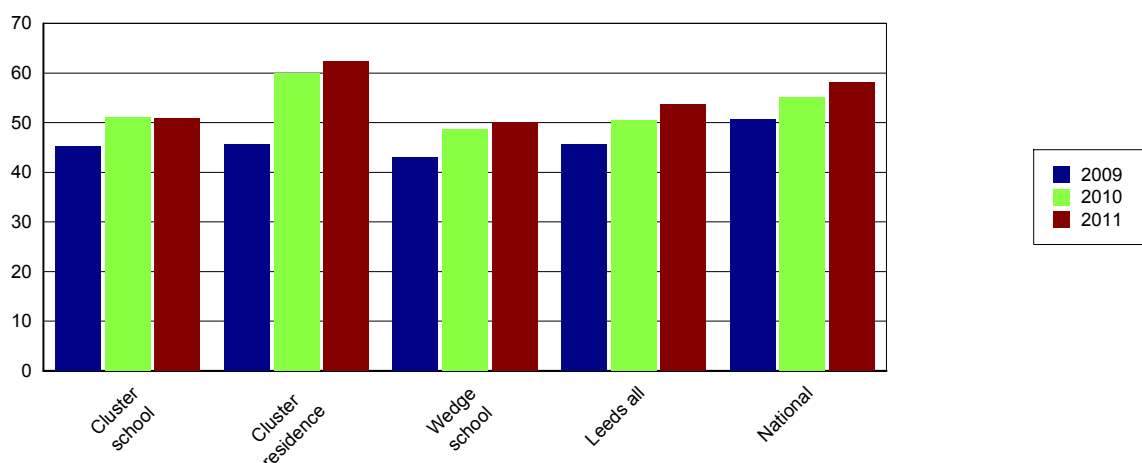
Percentage of English and Maths

Level 4+



Data Source: EPAS and DFE performance tables											DP: A		
The results are for GCSE & equivalent qualifications. The calculation of achieving no qualifications includes all qualifications													
KS4 Data	% of 5+ A*-C			% of 5+ A*-C inc Eng & Maths			% English Baccalaureate	% of 5+ A*-G			% achieving no qualifications		
	09	10	11	09	10	11		09	10	11	09	10	11
Cluster school	79	92	96	45	51	51	13	95	97	98	1	1	
Cluster residence	76	95	96	46	60	62	18	96	100	98	2	0	1
Wedge school	67	78	84	43	49	50	12	92	96	96	2	1	0
Leeds all	67	76	82	46	51	54	13	91	94	94	2	2	1
National	70	76	81	51	55	58	15	94	95	95		1	1

Percentage 5 A*-C Including English and Maths



Achieve Economic Well Being

Key: Not in Employment, Education or Training (NEET), In Employment, Education or Training (EET), in Full time Education (FE)													
Data Source: November destination survey													DP: S
NEET/FE		Number of NEET			% NEET			Number of FE			% FE		
		2009	2010	2011	2009	2010	2011	2009	2010	2011	2009	2010	2011
Cluster school	Year 11	19	14	SUPP	6	5	SUPP	247	274	278	83	91	95
	Year 12	SUPP	SUPP	9	SUPP	SUPP	5	187	167	169	95	97	89
	Year 13	6	8	9	4	4	6	125	142	105	81	78	68
Cluster residence	Year 11	SUPP	SUPP	SUPP	SUPP	SUPP	SUPP	94	103	122	87	93	95
	Year 12	SUPP	SUPP	SUPP	SUPP	SUPP	SUPP	95	67	68	95	100	89
	Year 13	SUPP	SUPP	SUPP	SUPP	SUPP	SUPP	59	75	43	87	80	72
Leeds all	Year 11	646	393	357	8	5	5	6703	7194	6564	80	87	87
	Year 12	132	67	115	3	2	3	3436	3476	3550	90	93	93
	Year 13	121	135	120	5	4	4	2067	2350	2593	78	76	84

Data Source: Integrated Youth Support Service										DP: O	
16-18 NEET and EET Nov 2011 to Jan 2012	NEET		EET		Not Known		Other Activity				
	Number	%	Number	%	Number	%	Number	%			
Cluster	12	3.3	353	96.5	SUPP	SUPP	SUPP	SUPP			
Wedge	493	7.5	6006	91.5	66	1.0	16	0.2			
Leeds all	1538	7.0	20170	91.7	343	1.6	58	0.3			

Please Note: Leeds totals for 16-18 NEET will not match publicised totals as published totals include a proportion of those whose status has expired